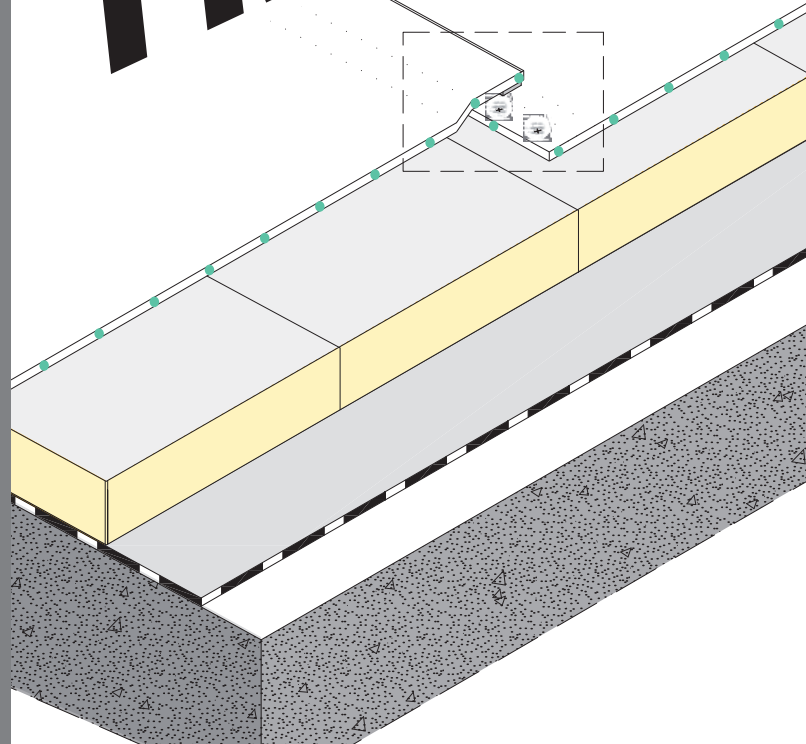


# Mapeplan<sup>®</sup> T M



## Roofing and waterproofing synthetic membrane



### DESCRIPTION

Mapeplan<sup>®</sup> T M is a synthetic roofing waterproofing membrane in flexible polyolefin FPO produced in one **multi-extrusion coating process**, with high quality raw materials, reinforced with polyester net. Mapeplan<sup>®</sup> T M is conform to EN 13956 standard.

### APPLICATION FIELDS

Mapeplan<sup>®</sup> T M is suitable for exposed roof installations and for mechanical fixing. It is resistant to ultraviolet rays and may be exposed to all weather conditions.

### NORMS AND CERTIFICATIONS

CE conformity marking according to EN 13956 standard.  
ISO 9001 quality system certification.  
ISO 14001 environmental system certification.  
BBA Agrément Certification.

Mapeplan<sup>®</sup> T M can contribute in the collection of LEED (Leadership in Energy and Environmental Design) Credits.



### TECHNICAL CHARACTERISTICS

Mapeplan<sup>®</sup> T M is a high standard quality product; it performs very good mechanical properties, best workability as well as excellent welding characteristics.

### - High solar reflectance

- High workability and weldability
- High mechanical resistance
- Excellent flexibility at low temperatures
- Excellent resistance to ageing
- Excellent resistance to UV rays and to weathering
- Vapour permeability
- Formulation without plasticizers

### PACKAGING

<b>PALLET</b>	14 rolls per pallet
<b>LENGTH OF ROLLS</b>	25 m 20 m 15 m (according to the thickness)
<b>WIDTH OF ROLLS</b>	2,10 m 1,60 m 1,05 m

### STORAGE

Store horizontally, shelter from sun and bad weather in a dry place.

### SAFETY INSTRUCTIONS

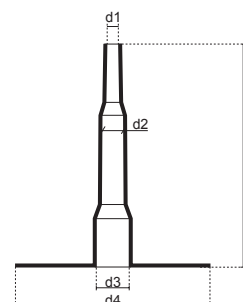
Mapeplan<sup>®</sup> T M is not considered dangerous according to the current safety regulation for the classification of goods and substances. The safety datasheet is therefore not compulsory for the purchase, transport and application. Precaution during use: ensure a proper change of air if the application is made in closed working environments.

TECHNICAL DATA					
PRODUCT PROPERTIES					
Product	Waterproofing membrane in FPO (flexible polyolefin), reinforced with polyester net.				
Colour	Top layer: high reflectance Smart White Bottom layer: black				
European standard	EN 13956				
CHARACTERISTICS STANDARDS - M.U.		Mapeplan <sup>®</sup> T M 12	Mapeplan <sup>®</sup> T M 15	Mapeplan <sup>®</sup> T M 18	Mapeplan <sup>®</sup> T M 20
Visible defects	EN 1850-2	None	None	None	None
Length (m)	EN 1848-2	25 (-0/+5%)	20 (-0/+5%)	15 (-0/+5%)	15 (-0/+5%)
Width (m)	EN 1848-2	2,10/1,60/1,05 (-0,5/+1%)	2,10/1,60/1,05 (-0,5/+1%)	2,10/1,60/1,05 (-0,5/+1%)	2,10/1,60/1,05 (-0,5/+1%)
Straightness (mm)	EN 1848-2	≤ 30	≤ 30	≤ 30	≤ 30
Flatness (mm)	EN 1848-2	≤ 10	≤ 10	≤ 10	≤ 10
Mass per unit area (kg/m <sup>2</sup> )	EN 1849-2	1,2 (-5/+10%)	1,5 (-5/+10%)	1,8 (-5/+10%)	2,0 (-5/+10%)
Effective thickness (mm)	EN 1849-2	1,2 (-5/+10%)	1,5 (-5/+10%)	1,8 (-5/+10%)	2,0 (-5/+10%)
TECHNICAL CHARACTERISTICS		Mapeplan <sup>®</sup> T M 12	Mapeplan <sup>®</sup> T M 15	Mapeplan <sup>®</sup> T M 18	Mapeplan <sup>®</sup> T M 20
Watertightness EN 1928 B Method		Watertight	Watertight	Watertight	Watertight
Reaction to fire EN 13501-1		Class E	Class E	Class E	Class E
Joint peel resistance EN 12316-2 (N/50 mm)		≥ 300	≥ 300	≥ 300	≥ 300
Joint shear resistance EN 12317-2 (N/50 mm)		≥ 650	≥ 650	≥ 650	≥ 650
Vapour diffusion resistance EN 1931 (μ)		150000	150000	150000	150000
Hail resistance - rigid support - flexible support EN 13583 (m/s)		≥ 18 ≥ 29	≥ 22 ≥ 32	≥ 26 ≥ 36	≥ 28 ≥ 38
Tensile strength EN 12311-2 (N/50 mm)		≥ 1100	≥ 1100	≥ 1100	≥ 1100
Elongation at break EN 12311-2 (%)		≥ 15	≥ 15	≥ 15	≥ 15
Resistance to impact - rigid support (A method) - flexible support (B method) EN 12691 (mm)		≥ 350 ≥ 900	≥ 600 ≥ 1100	≥ 700 ≥ 1500	≥ 900 ≥ 1750
Resistance to static load - flexible support (A method) - rigid support (B method) EN 12730 (kg)		≥ 20 ≥ 25	≥ 20 ≥ 25	≥ 25 ≥ 30	≥ 25 ≥ 30
Tear resistance EN 12310-2 (N)		≥ 350	≥ 350	≥ 350	≥ 350
Dimensional stability EN 1107-2 (%)		≤ 0,3	≤ 0,3	≤ 0,3	≤ 0,3
Foldability at low temperatures EN 495-5 (°C)		≤ -40	≤ -40	≤ -40	≤ -40
UV exposure EN 1297 (5000 h)		grade 0 - passes	grade 0 - passes	grade 0 - passes	grade 0 - passes
Exposure/compatibility to aged bitumen (possible colour variations)		compatible	compatible	compatible	compatible
SRI (Solar Reflectance Index) ASTM E1980		102	102	102	102
External fire performance Broof (t1) ENV 1187		available upon request	available upon request	available upon request	available upon request

Considering the various situations of use, the numerous types of support surfaces and the possibilities for use inside COMPLEX WATERPROOF LAYERING, Polyglass SpA cannot assume any liability for damages derived from the product's results in terms of function or aesthetics.  
Technical Data Sheet Rev. 1/14

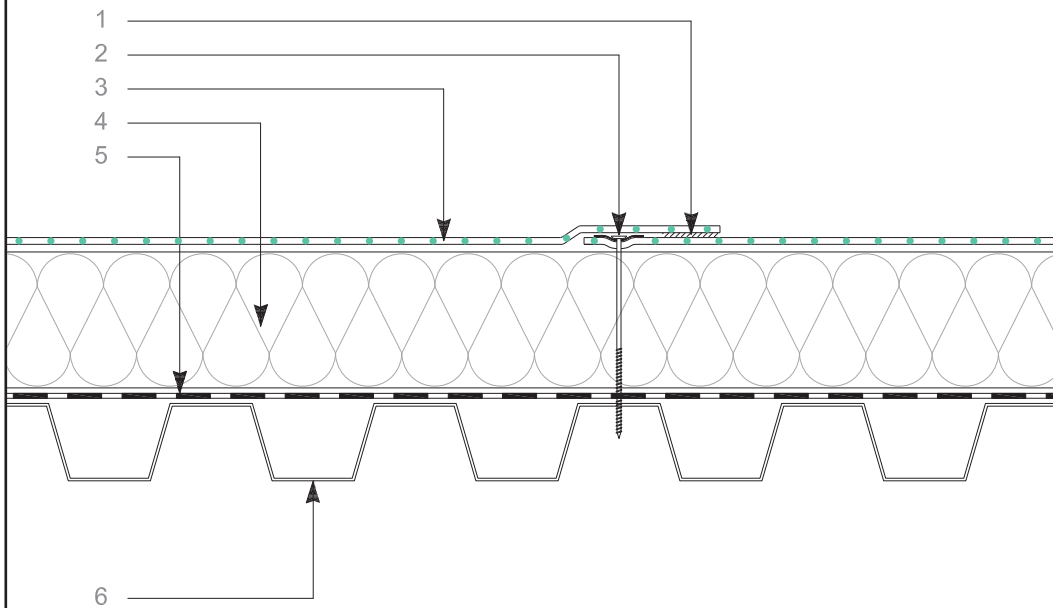
## MAPEPLAN<sup>®</sup> T ACCESSORIES

- Mapeplan<sup>®</sup> T D, membrane for details and particulars
- Mapeplan<sup>®</sup> T, metal sheets coupled to Mapeplan<sup>®</sup> T membrane
- Mapeplan<sup>®</sup> T, internal and external prefabricated corners
- Mapeplan<sup>®</sup> ADS 300, contact adhesives
- Mapeplan<sup>®</sup> T Seam Prep, liquid preparation overlaps
- Mapeplan<sup>®</sup> T Cleaner, cleaning liquid
- Mapeplan<sup>®</sup> T, outlets and special prefabricated pieces



CONNECTOR

## MAPEPLAN® T M LAYERING



- **High solar reflectance**
- *Environmental friendly*
- *Resistant to ageing processes*
- *Flexible at low temperatures*
- *Puncture resistant*
- *Hail resistant*
- *UV-resistant*
- *High workability and weldability*
- *Formulation without plasticizers*
- *Vapour permeable*
- *Dimensionally stable*
- *Excellent fire behaviour*

Technical specifications of product are available on the technical books.  
References for this product are available on request and on Mapei and polyglass web sites at the following addresses [www.mapei.it](http://www.mapei.it), [www.mapei.com](http://www.mapei.com) and [www.polyglass.com](http://www.polyglass.com)

### LEGEND

1. *Overlap/Hot air welding*
2. *Mechanical fixing system*
3. *MAPEPLAN® T M, roofing membrane*
4. *Thermal insulation (mechanically fixed)*
5. *Vapour control layer  
(for example Mapeplan® VB PE)*
6. *Substrate*



---

**MAPEPLAN range is produced by:**



**Registered Office: Viale Jenner, 4 - 20159 MILANO**

**Head Office: Via dell'Artigianato, 34 - 31047 Ponte di Piave (TV) - Italia**  
**Tel. +39 04227547 - Fax +39 0422854118 - www.polyglass.com - info@polyglass.it**